

2017

002419

1984

Sp@ce

2017 12

8

21

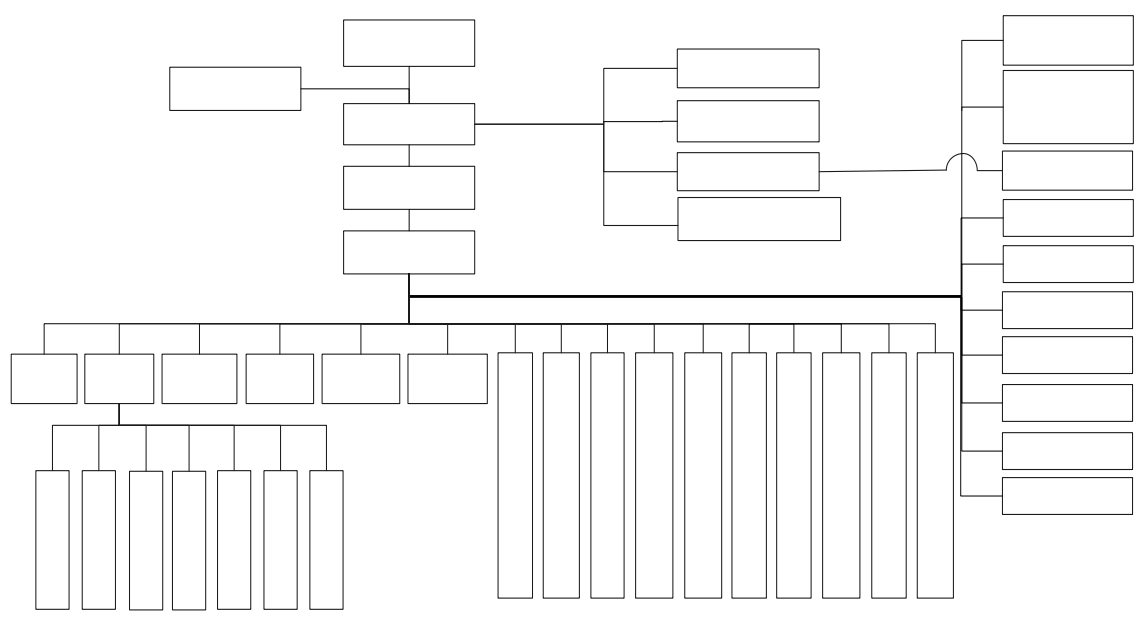
67

2

7

148

APP



	2015	2016	2017
	2,459,246	2,515,060	2,648,196
	1,739,606	1,727,296	1,853,628
	167,103	71,529	93,126

2017

5.22

1

2

3

2017 A 2016 A

2017 192 1 4
111

7

800,200,000 2017 10 2017 4.5
360,090,000.00 10
5 800,200,000 1,200,300,000

2016	28,807	52,411	54.96%

2015	44,011	120,841	36.42%
2014	26,624	53,842	49.45%

1

1

2

2

1

,

2

3

4

3

2017

1

2017

CC.Mall

80

2

2017 1 21

sp@ce

sp@ce

12 22

sp@ce

3

2017 8 8 Well Go

10 8 1.0

2.0

100

1

2016

2017

020

WIFI

2

in 2017 2.0 8 4 +

2017 512 37

1.0 2.0

80%

app

2017

2017

2R

(Ready to eat Ready to cook-)
2017

500 7

2017

Kids Republic

5 24

12 29

8

+

2017

2017

1

2017

Rain&Co. Rain&Color Rain&Home

VIP

Rain&Co.

Rain&Color

Rain&Home

KBNE

SPRINGFIELD

2

2017 8

	2022	SKU	3500	2017	12	31	SKU
896	800						

GSI

2017 12 186

2017 14

22

75%

92%

C

2017

3

2017

2017

/

/

/

/

2017

2R

ready to cook and ready to eat

1

642.4

1.11

		360312	
85.82		108	90%
	BBC		
20%		10	
			30%
		BBC	
2			
		36	
400			
		PAD	94%
88.5%			14.25% 58
	237		
3			
			2850
2017			
	ISO22000		
1			
2017		SGS	210

25550

2017

200

50613

5707

560

5744

13

3283

2

ISO22000

2017

ISO22000

ISO22000

12

SGS

3

2017

642

4322

2017

5%-15%

1

2017

2

2017

2017 7 6

12 15

3

2017 6 22

e

14

200 11 2017 3.5
100 2000 800
4

19.7% 10%
2017 1089

1.5 /

2017

KPI OKR

2017

2017

2017

416

4

4-7

12 25

108

16

25

2

2

5

2017

2016

100%

1 1

12

95

12

	99.54%	8662
	99.53%	1266
	99.39%	816
	98.36%	3775
	98.59%	419
	98.95%	189

	5303	34.78%
	9946	65.22%

	15249	100%
--	-------	------

41	3327	21.81%
31-40	6047	39.66%
30	5875	38.53%
	15249	100%

2017

2017

12

2000

5000

2

125000

2

7500

7

21000

13

65000

2017 , 1140 40
1211
2017 11
16
2013
2017 12 938
152 171
2017
4029
2017 8 2017
12
2017 7
200 ,

			18		
2017	9	8			
			2018	1	22
					27
					53660
		40.78			
		12			
					2.5
			2017	6	9
					6000
2017	7				
26		50			85
					48
2017	8	23			
,					
					25
					300
		500			26
		500			
			500		50
					500

24

2017 1

2017 2

2017 3 25 -26

2017 5

2017 7 8

2017 7

99

4

2017 6 3

10 28

30

2017 8 3019

3019

2

2017

2017 12 6

2017-2018

2017 12 9

50

2017 1 1

2017 3

2017 11

2017 3

2017 9

2017 10 14

400

2017 3

2017 3 25
20:30

WWF

2017 4 2

2017 5 1

OFO

2017 9.17

2017 11 8

2017

3000

LED

	LED		2017		2017	
234.7kw. h/	/		2017		2016	351
431.37						
3019				5		

QA

26

2017 1 21

2017 2 23

2016

2016

2017 3 29

2016

2

2016

2017 6

2017 6 30

2017 7 20

/ /

2017 8 Kids Republic

2017

2016-2017

2017 9 3 , 2017-2018

2017

2017 9 2016 50

2017 11 29

2017 11 2-4 2017

2017 CCFA

2017

2017 CCFA

2017

2017CCFA

2017 11

2017 12

2017

2017 12 GDP 20

2018

2018

2018

2018

2018

2018

